



Introducing

Hyperion
Equipment Ltd

**Specialist Coating
Applications, PFP,
Internal and External
Pipeline Coating**





CoverCat
(Thailand) Co. Ltd.,

PROFILE

CoverCat has now opened a facility in Thailand and is providing a fully equipped range of machines for the PFP Industrial Painting and Pipelining Industries from a new site in Rayong, Thailand.

We will be supplying customers, distributors and agents directly from Thailand and throughout the Asia Pacific region.

The CoverCat brand and product range is actively carrying out an expansion drive to new and existing clients worldwide from our new facility.

Our aim is to market, supply and support the specialist coating application industry through a choice of agents and distributors and to create further strategic alliances with manufacturers of complimentary products.

We are extremely grateful to our customers past and present for their support and it is with this in mind that we set out our product range for the future with new goals to further improve and expand our range of equipment and services. At the outset, in 1984, the company supplied Industrial Paint Spraying Equipment, offering both Sales and Hire options with the added benefit of on site or in-house servicing capability and this is still a valuable part of the service we provide.

CoverCat designed and manufactured its first Original Equipment Design of Plural Component coating system in 1988 and created the name CoverCat for all future products.

We now have a 28 year history and 24 years of Engineering design to support the client and dealer network.

The CoverCat range of standard systems are available either directly or through a nominated distributor. We are also represented by several authorised factory approved Agents.

CoverCat is also experienced at producing special or unique systems designed and manufactured to individual customer requirements.

We have always recognised the need to be at the forefront of spray technology and continue to invest in research and development to create innovative solutions to meet our clients needs on a world-wide basis.

Service, Hire and Technical Support

CoverCat equipment is known and used world-wide by customers who require a reliable and repeatable quality of application for both high and low solids coatings:

CoverCat provide a complete service to Spray Coating applicators and their clients by offering to undertake a wide range of activities for new or existing equipment:

- Application Partnerships
- Research & Development
- Design
- Manufacture
- Installation
- Conversion
- Refurbishment

- Testing
- Training
- Support

- Ship Building
- Off Shore Maintenance
- Oil & Gas Industry
- On-site Service
- Pipeline Renovation
- Petrochemical facilities
- Water & Waste Water
- Hire/Rental/Leasing

DEMONSTRATIONS, TESTING AND TRAINING

CoverCat will be pleased to arrange demonstration equipment in Europe, Thailand and throughout South East Asia and also further afield worldwide by special arrangement. CoverCat is able to carry out demonstrations on site or in house. Please contact our offices to make arrangements.

A comprehensive training program is recommended with the commissioning of any system. At each stage of the training course a large emphasis is placed on the importance of preventative maintenance. A certificate will be issued to everyone completing the training course.





CoverCat
(Thailand) Co. Ltd.,

CoverCat IN-SITU SPRAY LINING RIGS

CoverCat Pipeline Engineering manufactures new in-situ spray lining rigs to individual requirements for a number of customers and can offer the option of modifying, refurbishing or upgrading existing equipment for the application of various component products.

For further details, contact CoverCat Pipeline Engineering.



CoverCat Lining Machinery



A range of special coating application turbines are available to allow coatings to be applied in pipes from 1.1/4" (32mm) i.d. to 40" (1250mm) i.d. (Insitu Lining rigs may only coat pipe above 3" (75mm))

The Turbine head is connected to the Lining Rig through an umbilical hose assembly carefully constructed and Kevlar braided in lengths up to 750feet (250m)



The Lining rig is controlled by a specially developed computer system using CoverCat HMI software with remote support by digital modem. The System and software is DWI compliant.



www.covercat.com



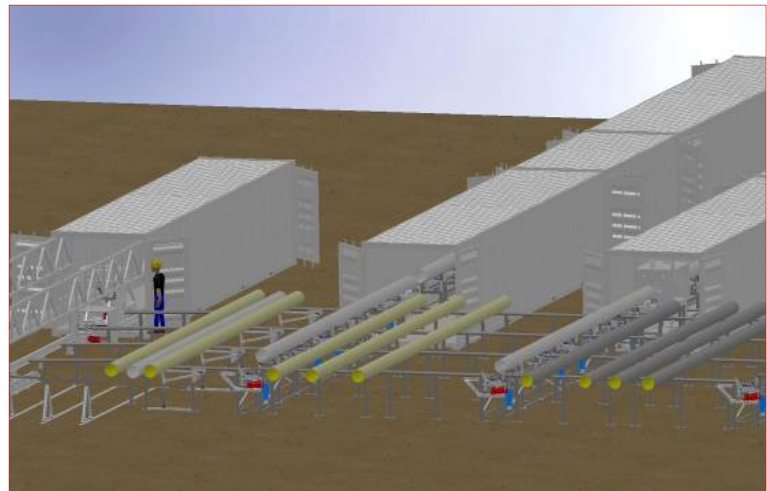
CoverCat
(Thailand) Co. Ltd.,

CoverCat Factory Lining Equipment



CoverCat Pipeline Engineering has a range of standard designs of Internal Pipe-coating machinery. We are also proud of our design philosophy in utilising standard components from our range together with custom made parts and off shelf items from a wide variety of suppliers within the engineering, electrical and control industries.

The range is extensive, from a simple 2 man operated in situ pipe-coating machine used in a domestic drain and sewer to large in-house plant with 120" (3metre) diameter and 60feet (18 metre) length tubular sections.

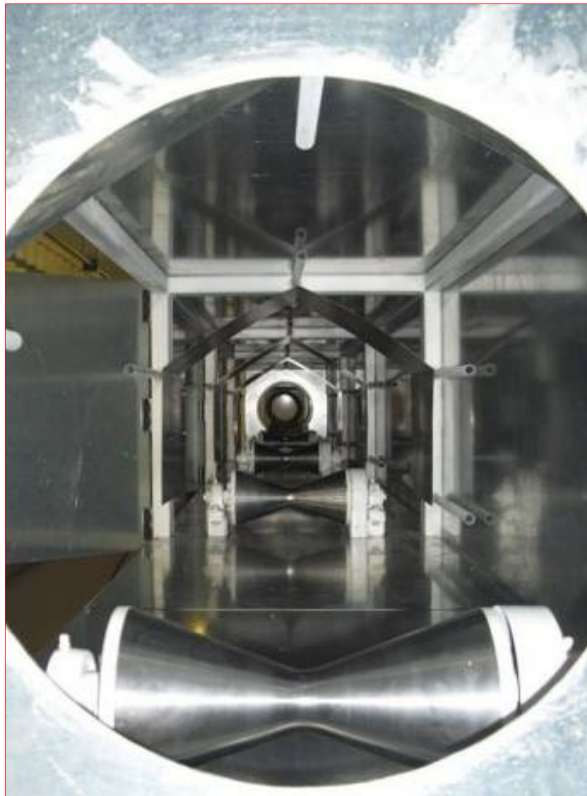


The unique CoverCat Containerised Pipe Plant system is built into a set of 9 containers and is capable of internal and external blasting and coating or any combination of these. This may be linked into other **CoverCat HMI Flow Monitoring** equipment to provide a fully automated coating thickness and speed control with print out and download functions. The boom may be changed to larger sizes to accommodate different coating head and specifications may be adjusted to individual requirements. A range of pipe handling and pipe support frames are available to allow manual or automated handling of pre coated and finished pipes as required. Coatings may be provided to the system from **CoverCat Single and Plural Component Systems** or may be adapted to existing coating plants



CoverCat
(Thailand) Co. Ltd.,

CoverCat Factory Lining Equipment



The **CoverCat Pipeboom 600** (above) is a self contained drive and boom system capable of internal coating application in pipes from 2" (50mm) to 24" (600mm) and upto 60feet (18metres) in length. Boom sections are typically 20feet (6metres) long.

Larger sizes of pipe upto 98" (2500mm) are coated with the **CoverCat Pipe Boom 1000** is a larger scale version of the unit above and is suitable for lining pipes in the range 20" (500mm) to 120" (3050mm)

Our highly trained and skilled engineers work along side support staff and where b=necessary special sub contractors in assembly if our systems.

The machines are linked into our **CoverCat HMI Flow Monitoring** equipment to provide a fully automated coating thickness and speed control with print out and download functions.

Boom units may changed to larger sizes to accommodate different coating head and specifications may be adjusted to individual requirements.

A range of pipe handling and pipe support frames are available to allow manual or automated handling of pre coated and finished pipes as required. Coatings may be provided to the system from **CoverCat Single and Plural Component Systems** or may be adapted to existing coating plants





CoverCat
(Thailand) Co. Ltd.,

CoverCat 900 PIPESNAKE

Articulated Snake with Multiple Drive Units for negotiating tight bends & inclines, fully reversible

The Pipe Snake has been developed to fulfil the need for a pipe coating & inspection tool which was able to negotiate tight corners, in any direction, and able to climb and descend inclines.

The PipeSnake and a new Pipe Mole are being made available as inspection and repair tools for areas of special configuration and where access may be a problem.

The machine is designed to work in wet or hazardous areas.



The only system in the world capable of coating internally around bends from 1.5D in sizes from 6" (150mm) to 40" (1000mm).

The PipeSnake is an articulated self powered drive system capable of negotiating bends and climbing vertically up and down in complex pipe systems in need of renovation and repair.

The system is remotely controlled and may be inserted up to 300feet (100metres) in to the host pipe through a series of bends and may even accommodate tapered sections.,

CoverCat Facilities

CoverCat is located in 8,000 square feet (800 sq m) facility at Stockton on Tees, Cleveland U.K.



CoverCat
Exhibition
Stand



www.covercat.com

Passive Fire Protection (PFP) Application Equipment

Solvent Free Epoxy Intumescent Plural Component Spray

CoverCat 452F

High capacity PFP application Machine

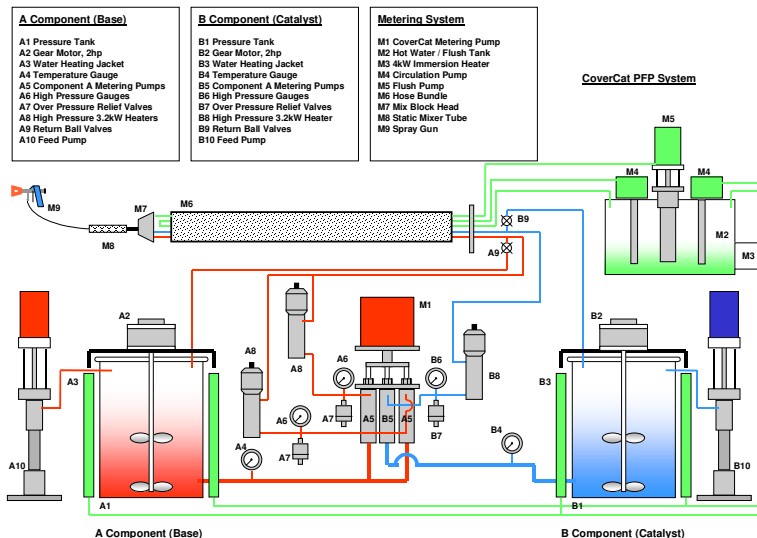


CoverCat produces the largest 450 series units for application of high volumes of PFP materials in the largest of fabrication facilities

The system uses 3 phase electrical power at 220V or 400/440V (to be specified).

Hose lengths to 60 metres plus remote mix manifold

- Easy to Maneuver and operate
- Manufactured for use with heavy duty fixed ratio coatings
- Air powered, hot water heated hose and flush
- Avoids handling and manual mixing
- Increased safety - no solvent addition
- Improves mix quality and spray quality
- All equipment on one cart unit
- Single power cable from 3 phase supply
- Lift Frame, forklift pockets and a 4 wheel cart



CoverCat 350F, 450F Skid units and 351F, 451F ATEX PFP Units

The original and popular skid mounted systems for Passive Fire Protection

The CoverCat 351F and 451F System is skid mounted and comprises of digital temperature control and other higher level instrumentation for the most critical applications.

These units are typically used on Offshore platforms and other critical locations.

Hose lengths to 60 metres plus remote mix manifold



Passive Fire Protection (PFP) Application Equipment

Solvent Free Epoxy Intumescent Plural Component Spray



CoverCat 302F – 3000

CoverCat has developed a special unit for direct drum feed using 1:1 ratio materials with a fixed ratio displacement pump mounted to a self aligning ram system using twin follower plates

The system uses 3 phase electrical power at 220V for the USA and 400V for other locations.

- Easy to Maneuver and operate, Compact and portable
- Manufactured for use with heavy duty 1:1 ratio coatings
- Air powered, hot water heated hose and flush
- Increased safety - no solvent addition, Cure time improvements over solvent material
- 100 feet (30 metre) hose assembly with remote mix manifold.



CoverCat 302F

The unit with the simplest operation possible of our Plural component systems using hot water heater for materials tanks and hoses. Suited to most PFP materials with ratio changes made between 1;1, 2:1 2.3:1 and others very easily carried out.

A fixed ratio displacement pump, 2 x heavy duty feed pumps and a 50 foot hose bundle with mix block gun and tip are included.

- Easy to Maneuver and operate all equipment on one cart with forklift pockets
- Compact and portable with steering
- Suited to many material applications
- Increased safety - no solvent addition



CoverCat 352F

The CoverCat 352F System is compact, mobile and simple to use being most suited to small and medium sized applications and can replace Single Pack application where solvent addition would have been necessary.

Key Benefits include:

- Easy to operate and service with solvent free application and low wastage
- Produced as a contractor friendly machine for fixed ratio PFP application
- 100 feet (30metre) hoses to remote mix manifold can be extended to 200 feet (60metre)



CoverCat Mix Ram And E-Mix Units

Hydro-pneumatic mixer for Heavy duty coatings and PFP materials. Mounted on a cart unit with simple valve controls for mix speed elevation and operation. The E-Mix is an enclosed ATEX Rated version of the Mix Ram



Fixed Ratio Plural Component Spray Coating Equipment

A standard range of products with upgrade options.

Typically cart mounted but also available on frame or skid mounting for installation in the clients own vehicle or facility.

CoverCat 302

Compact Cart Mounted System suitable for use in confined areas

The **CoverCat 302** has been designed specifically for use where access in confined areas, through building access doors or walkways is required. Also used on Roof areas and on sites where rough ground is common.

The unit is intended mainly for single gun application of a range of low to high solids plural component materials.

It can be used with a remote mix manifold and hose extensions for fast cure materials including Epoxy, Polyurethane and Polyurea coatings.

CoverCat 352E

Heavy Duty and Multi Gun Spray system for Low Solvent, High Solids, Plural Component Paint Spraying with Multi-Gun capabilities



CoverCat 452E

The Bulk Supply Spray System
High Solids, Plural Component Paint Spraying with Multi-Gun capabilities

The **CoverCat 452E** is the largest most powerful plural component spray system made by CoverCat and has no equal in capacity or capability.

A high volume, heavy duty spray system with cart mounted 55 Gallon (200litre) Component Feed drums. The System is regularly used in Shipyards and supplies upto 6 Spray Guns on individual hoses to 500feet (150 meters) from the unit. It has been extensively employed in Shipyards in the USA with great effect. The heavy duty cart with Lift Frame Option is highly portable. It is a self contained unit requiring only air and power supplies to enable operation.



CoverCat 302 range of
Compact single gun units

The **CoverCat 352** is a heavy duty spray system typically used in shipyards, heavy industrial or construction facilities where several spray guns may be used simultaneously from one unit.

The machine may be used with remote mix manifold applications for fast cure and 100% solids materials. The unit can be placed upto 60 meters from the Spray gun(s) using umbilical hose assemblies in multiples of 50feet (15m).

Paint supply may be 5 gallon (25Litre), or 55 gallon (200litre) drum.





CoverCat
(Thailand) Co. Ltd.,

Specialist Plural Component Spray Coating Equipment
A range of products for specific applications with upgrade options.

CoverCat 306VR Adjustable Ratio Paint Spraying Machine



CoverCat now offers a fixed ratio Spray machine with a simple mechanical adjustable ratio yoke system.

The ratio is fixed at all times during use and so provides accurate ratio control without the concern of any electronic or sliding scale adjustment. To change ratio between products simply release a clamp screw and move the pump to the correct pin located position and tighten the clamp screw.

This means that operator error and other factors are virtually eliminated and a simple ratio test allows the system to be prepared for any new product.

Pressure Output up to 5500 psi (360 Bar) and delivery to 1.25 gallons (6 litres) /minute are achievable at normal stroke rates.

CoverCat Hose Bundle assembly and Remote mix manifold with whip hose and spray gun with reversible spray tip

CoverCat uses the highest specification wire and Kevlar braided hose with a 4:1 safety factor for maximum user protection

- Easy to operate
- Easy to service
- Low replacement parts costs



CoverCat Genuine Replacement Spare parts



Specially selected and quality checked parts and accessories for all Covercat machines are always on stock for your continuous round the clock support



CoverCat
(Thailand) Co. Ltd.,

CoverCat Manufacturing Facilities



CoverCat is located in 8,000 square feet (800 sq m) facility at Stockton on Tees, Cleveland U.K.

CoverCat
Exhibition
Stand



CoverCat CNC Machine Shop



CoverCat Assembly



CoverCat PDI and Testing



CoverCat Inspection



www.covercat.com



CoverCat
(Thailand) Co. Ltd.,

CoverCat Pipeline Engineering Ltd.

CoverCat Pipeline Engineering Ltd was established in 2001 to provide a full range of pipeline renovation equipment for the Water, Petrochemical and Industrial sectors, providing coating contractors with spray systems for both internal and external applications. CoverCat PE has set about the task of designing new lining equipment which will reliably and consistently apply high quality linings under typically adverse site conditions.

CoverCat Pipeline Engineering is partnered by the Hyperion team of experienced and resourceful team with the capacity to offer cost effective and innovative solutions. In addition we offer our customers the option of modifying, refurbishing or up-grading your existing coating equipment, or of converting equipment to alternative component products for differing applications.

Hyperion Equipment Limited

In our facilities at Primrose Hill in Stockton on Tees, Cleveland, UK, Hyperion holds a comprehensive stock of spare parts and consumable items for trade counter collections or overnight deliveries.

Combining all this, we offer on-site service and technical support, maintenance contracts and also operator training.

This represents a complete support package and one stop shop for our clients requirements in this specialist field of a highly technically capable industrial field.

Hyperion Equipment Limited
CoverCat Pipeline Engineering Ltd

Thailand Office and Facility

50 Watchaklukya Road,
Huaypong, Muangrayong
Rayong, 21150. Thailand
Tel: +66 (0)38 685 247 50
Tel: +66 (0)8 6415 8113
Tel: +66 (0)8 1940 9833
sales@covercat.com
www.covercat.com

US Office

5 Broad Ave, Ossining,
New York 10562
Tel: 914 762 8700
Fax: 914 762 1202
sales@covercat.com
www.covercat.com

UK Office

5 Orde Wingate Way,
Primrose Hill Ind Est.
Stockton on Tees
TS19 0GA UK
Tel: +44 (0) 1642 672 661
Fax: +44 (0) 1642 677 130
sales@covercat.com
www.covercat.com

AGENT /DISTRIBUTOR:

--